



SimRaceShop.com DensuFlag Pro

With mounting hardware and SimHub LED profile

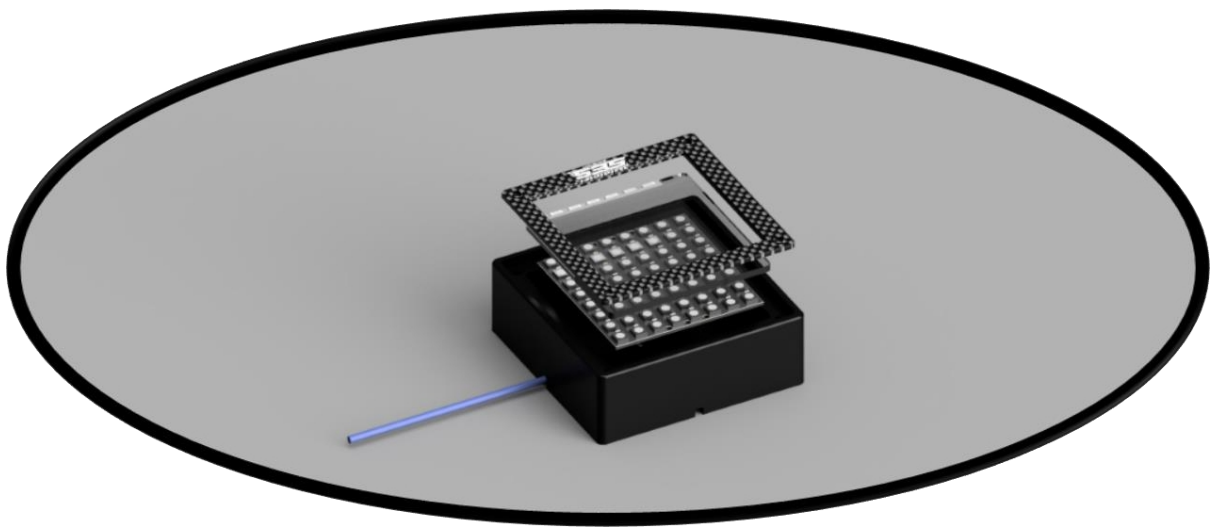


Table of contents

- Quick starter guide
- Scope of delivery
- Installation instructions
- Commissioning

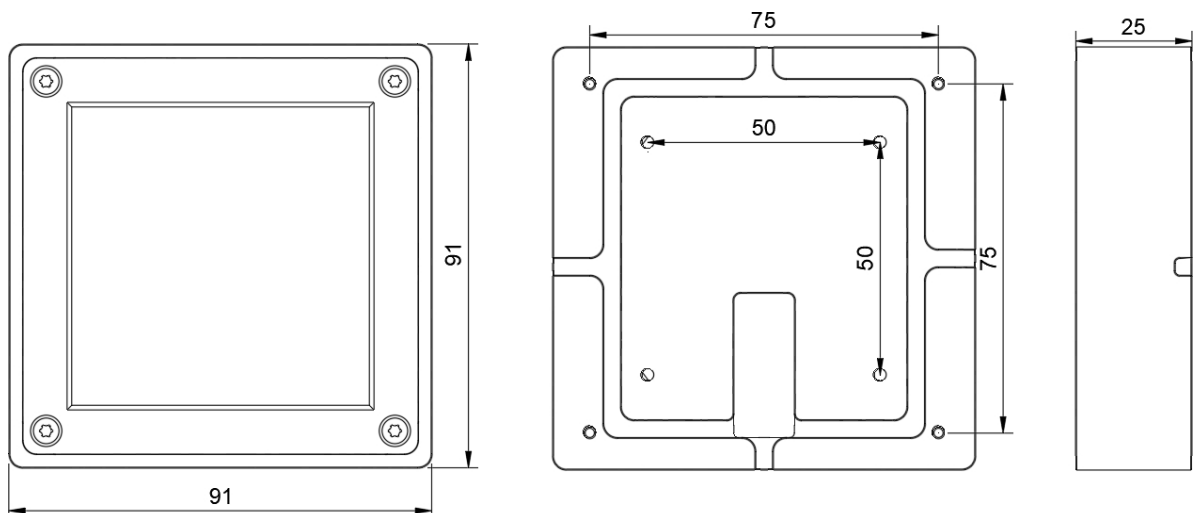
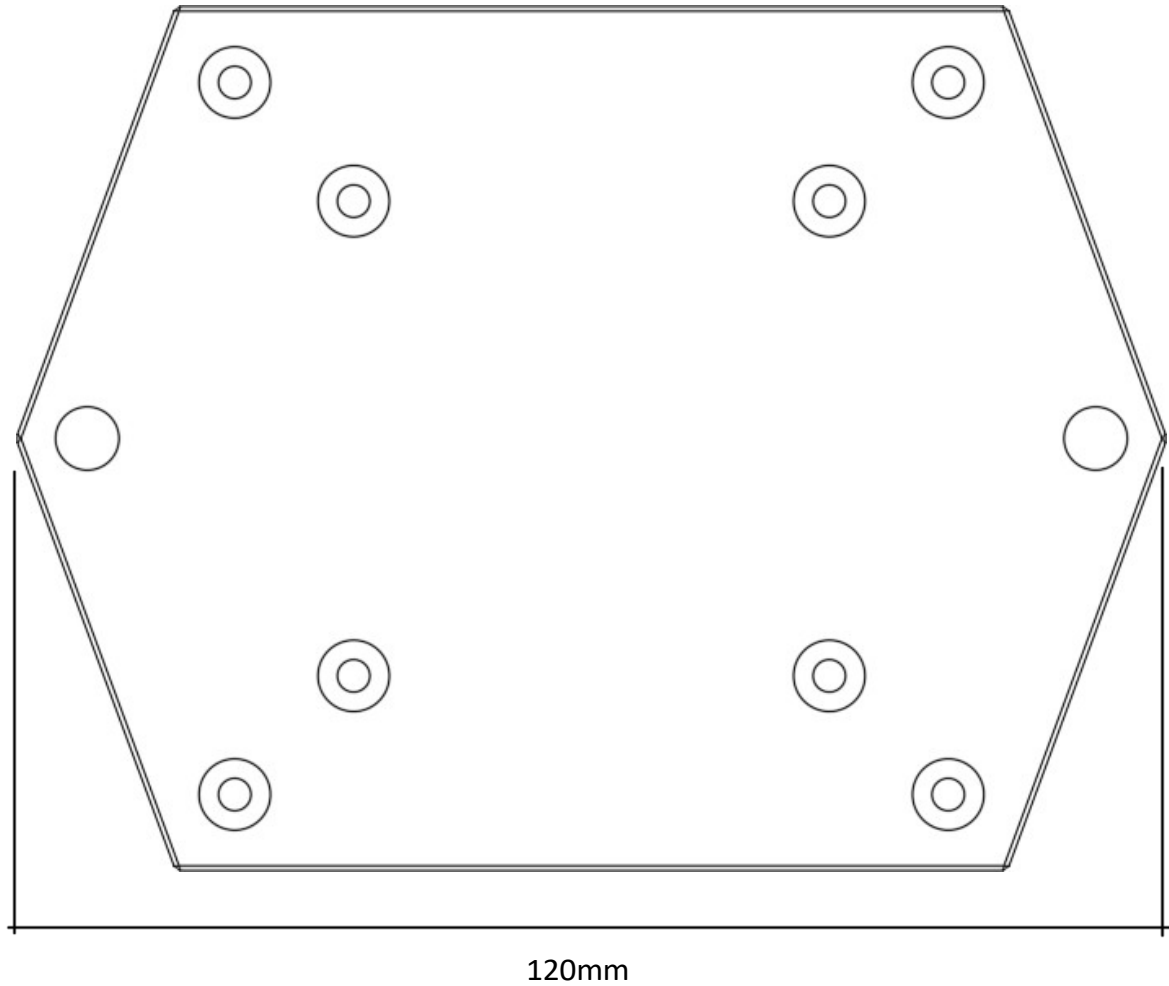
Scope of delivery

DensuFlag Pro	1
Quick Start Guide	1
Mounting plate Vesa 50/75	1
M3x8 countersunk screw	4
M6x12 cylinder head screw	2
M6 T-slot nut	2
USB-C cable	1

Quick start guide

1. Install the freeware SimHub:
<https://www.simhubdash.com>
2. Start the SimHub program and select "Devices" and "add new Device," select "SimRaceShop.de – DensuFlag Pro."
3. Connect and route the USB-C cable as desired in the cable guide on the back.
4. Attach the mount and the DensuFlag Pro to your rig in the correct position to your rig as described in the instructions.
5. Connect the DensuFlag Pro to your PC or active USB hub using the USB cable.

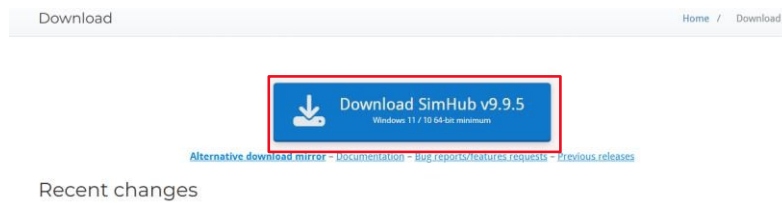
Installation instructions



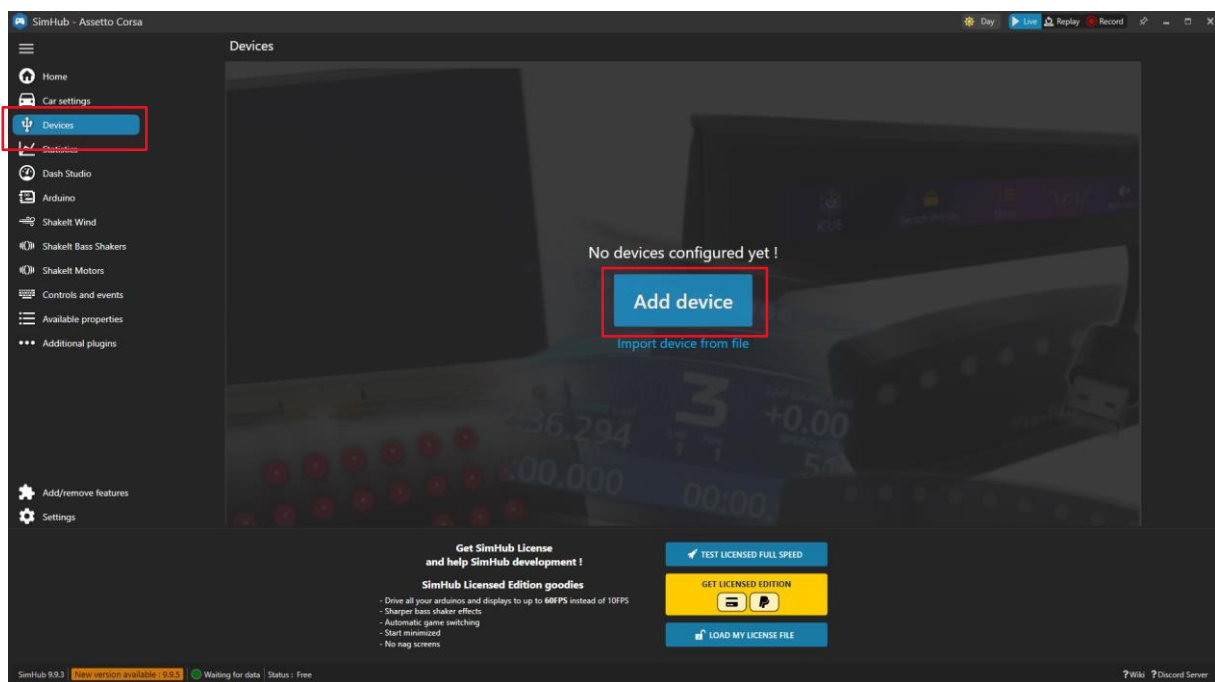
Commissioning

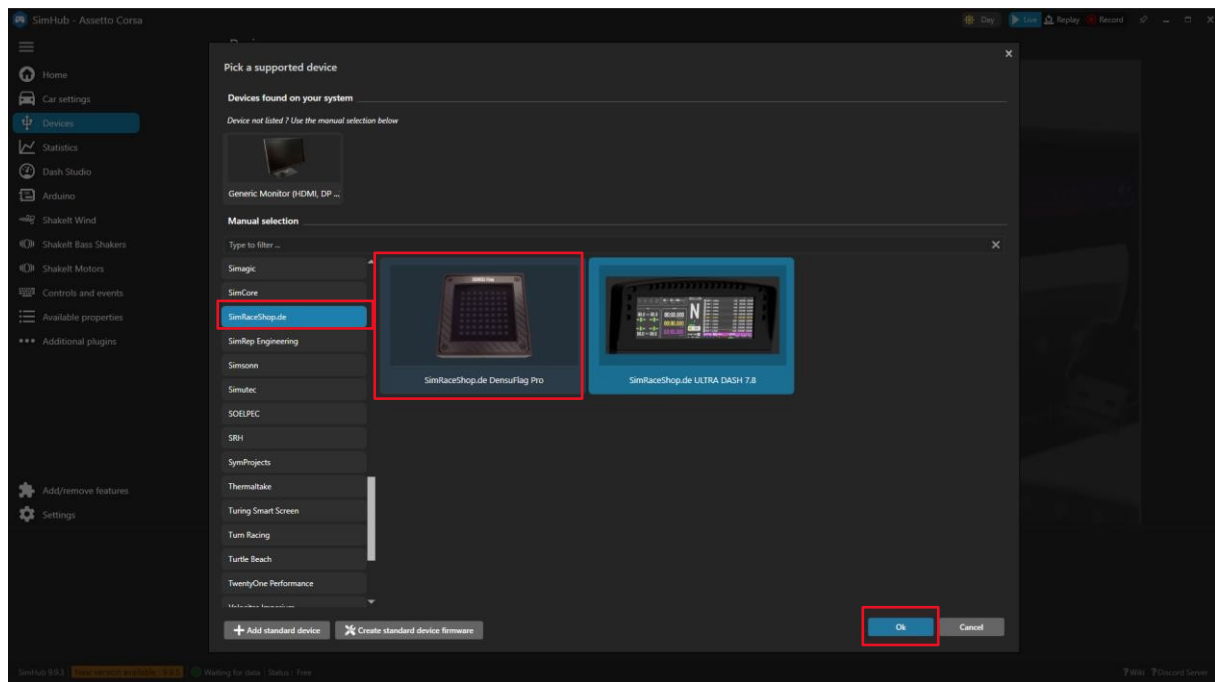
1. Install the freeware SimHub:

<https://www.simhubdash.com>



2. Start the SimHub program and select "Devices" and "add new Device."





3. Under "Hardware – Connect to specific device," select the ID of the connected DensuFlag Pro. This is especially important if you have several DensuFlag Pro devices in operation!

